

# COMBS PARISH COUNCIL

## SUMMER NEWSLETTER 2021



Well, I am not quite sure what happened to spring but summer is certainly here with temperatures in the high 20 degrees although our typical British summer seems to have returned, its raining at the moment. I see many of you walking around the village and exploring the footpaths. In this newsletter you will see that the Parish Council are working on a footpath map of our village and have some suggested walks to take.

Over the last year due to Covid 19 the Parish Council has had to hold their meetings remotely using the platforms Zoom or Teams. From June we will be going back to the Community centre to hold our meetings around the table, for some of our new councillors this will be the first time that we have all been able to get together as a Parish Council. As a reminder anyone is welcome to attend our meetings and see what is going on. Dates and times of meetings are in the newsletter as well as published on the notice boards but please contact the parish clerk first before attending.

Traffic speed through the village has been of some concern for a while and with our 2 SID's (Speed indication device) have helped remind drivers of the speed they are doing and has slowed them down. Tony Kitson has now been able to download the data from the devices and has analysed the results. You can find more details of this in the newsletter. We have also started to replace some of the speed signs through the village, some of which have faded and are unreadable others that are missing.

Have you seen the new notice boards in the village? These have been made locally and have the "Combs Parish Council" name carved on them. They are made of Oak so will last a long time. We have had two made which have replaced the old ones that were getting tired. Eventually we hope that all the notice boards will be upgraded.

The Parish Council continues to work with the Oaks Meadow Project and are looking at how we can help move the project forward. They are holding an open day on the 4th July for everyone to come and see what is going on giving an update on the work in progress as well as the next steps.

**Stuart Scarff - Chairman**

## Parish Walks



In the Spring newsletter, we mentioned that we were building on the parish walks designed by Bill Baldry a few years ago.

We have now identified 5 walks around the parish of varying length and difficulty, from approx. 1.2 miles to approx. 5 miles. There are also 6.5- and 10-mile walks on our website for the more adventurous!

These walks will be available on the village website

[www.combsvillage.org.uk/combs-life/combs-walks/](http://www.combsvillage.org.uk/combs-life/combs-walks/) very soon, along with notes highlighting various points of interest.

During this project we have spotted several missing or damaged footpath signposts, we have contacted the relevant body for these to be repaired or replaced. We are also considering the placement of information boards on the walks detailing the points of interest.

**Two thirds of fly tips  
last year came from  
**YOUR** homes**



Let's **S.C.R.A.P.** fly tipping  
[suffolkrecycling.org.uk/fly-tipping](http://suffolkrecycling.org.uk/fly-tipping)



**Do you need waste material collected?  
Don't be caught out by rogue traders. If  
someone on social media offers you a  
deal that seems too good to be true to  
take your waste away - it probably is!  
Find out what you need to know on the  
website before hiring anyone.  
[suffolkrecycling.org.uk/fly-tipping](http://suffolkrecycling.org.uk/fly-tipping)  
**#SCRAPflytipping****

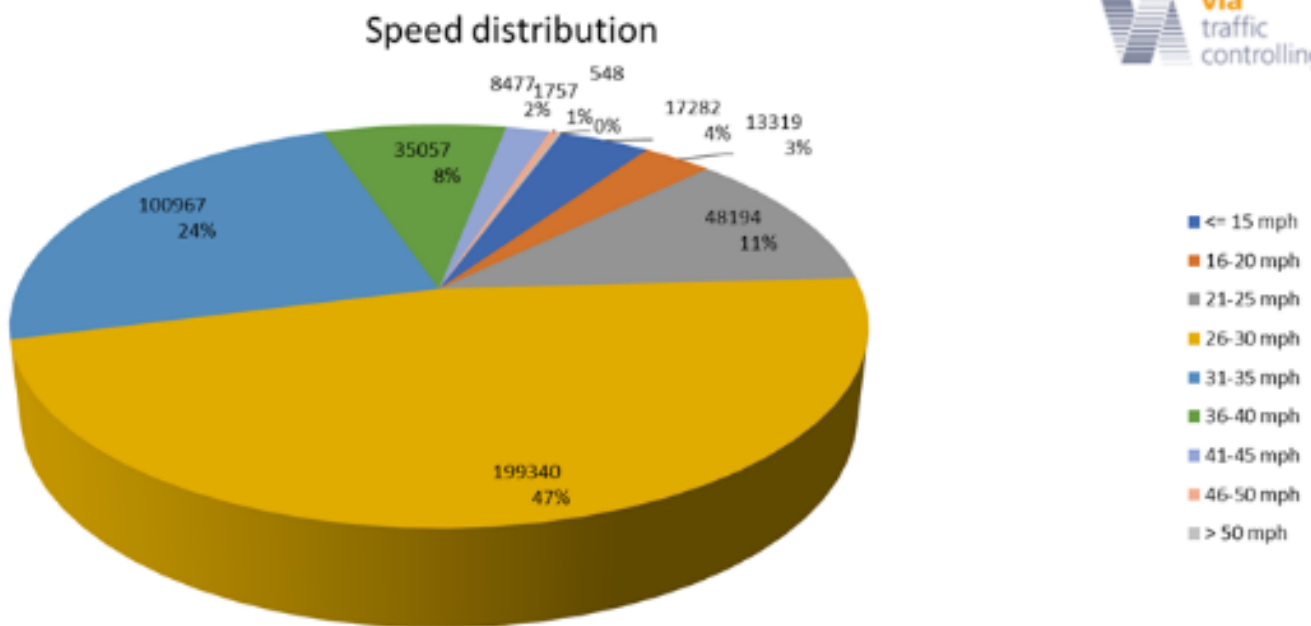
### HELP REQUIRED

The Combs village sign has given good service but is now displaying the need for some sympathetic restoration before it falls into total disrepair.

Combs Parish Council would appreciate talking to either the original artist Jane Worsley or any other local budding "Repair Shop" artists who would be able to assist or advise us in how to get this landmark back into good fettle for another twenty years plus.

[combsparishcouncil@gmail.com](mailto:combsparishcouncil@gmail.com)





We've downloaded some of the data from our speed indicator devices (SIDs) which have been positioned at various locations along Park Road and Tannery Road. The results are fairly encouraging:

- Overall around half of drivers obey the 30mph limit - so thank you and well done!
- 85% of drivers drive at 34mph or under
- There's a big build up from 7:00-9:00am in both numbers of vehicles and average speeds which makes this a good time to exercise most caution.

It would be good to lower our average speeds and contributory habits though: please try and help do so by dropping your speed if you find yourself drifting (as, ahem, many of us do) above 30mph.

Thanks again to all of you helping keep our roads safe.

**Parish Council Meetings  
Battisford Village Hall 7:30pm**

12th July

No August Meeting

13th September

Please contact our clerk 7 days

before if you wish to suggest an item for the agenda or to attend a meeting

**[combsparrishcouncil@gmail.com](mailto:combsparrishcouncil@gmail.com)**

## Thank you from the Combs Parish Infrastructure Investment Team

A very big thank you from all your team for the ideas and suggestions that you've sent us recently, we have listed them below for everyone to look at and see if you can put your thinking caps on for just one more time with anything new.

Please keep them coming whether its now or further down the line as our intention is to keep this plan regularly updated not only as an investment guide for the Parish Council but to also register with our District Council for further investment consideration in what their residents value and wish for, this will also act as a support to several local projects who will be or are currently applying for grants from quite large trusts, your aspirations not only validate their projects needs but go a long way in supporting them.

Again many thanks and do please keep those Ideas coming.

### **P.I.I.P. Aspirations**

Walks – Rest stations, info & history boards.

St Mary's Bell Restoration Project

Housing- More singular small scale dispersed development, eco/affordable, starter and bungalows requested.

Increased heritage tree planting across the Parish.

Cemetery Infrastructure Upgrade Project

Oaks Meadow, a central village hub/community space/play area.

Local area cycleways interconnecting with nearby villages and town.

Requests for various groups and clubs with assistance to start/support these.

Mill Lane/Park Road intersection lump of dirt island removed or improved to something more sightly.

Jacks Lane/Park Road junction grass area improved with bench and wildflower beds.

Mobile shop/Pop up shop/Pop up market (Local Producers ?) Virtual village shop.

Lighting in Combs Green Road.

Litter bin and dog bin in the Moats Tye area

Quiet Lanes

Village signage at highway entrances to Parish

Remedial work and upkeep to main village sign at Mill Lane/Park Road junction including any improvements to the area with planting and seating

Park Road sign and barrier improvement

# The Cricket Club

We have been able to play a full season of cricket thus far and despite the weather have managed to get all our games on. We had our first cricket festival at the end of June and have held a couple of intra club □ games. We are also hosting some county games for youngsters and adults during the next couple of months.

We are also holding a **Prosecco Cricket** evening on **Friday 16th July** to introduce more young women and ladies to the game. It will be an opportunity to have a complimentary glass of bubbles or non alcoholic drink and try out some cricket in a fun way. **Arrive 6.30 for 7pm -9pm**. No previous experience needed and it's similar to a game of family rounders or cricket.

Coaching takes place on Friday evenings through til end of July. Now that inside drinking can take place and hopefully as restrictions lift further we will be able to hold some social events too.

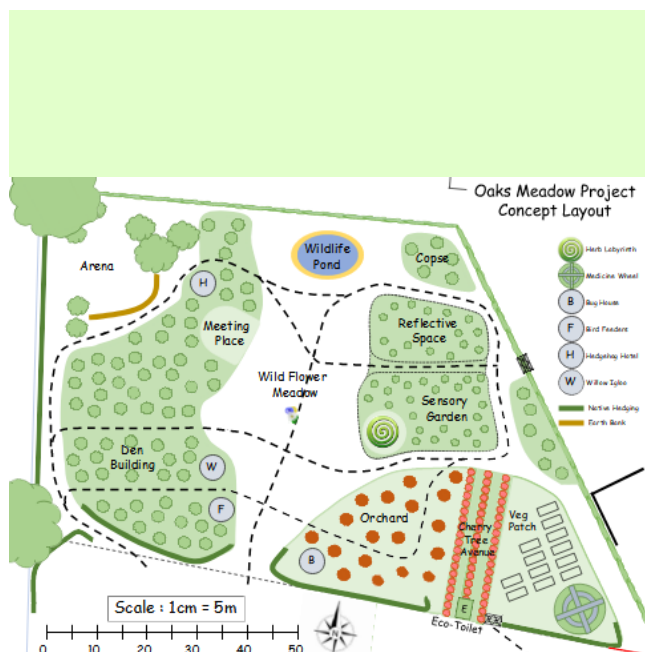
Please keep an eye out on our website, Facebook or Twitter page

<https://battisforddistrict.play-cricket.com/>

Twitter @BattisforDCC

Facebook @BattisfordAndDistrictCricketClub

Or contact Julia Stephens - Row secretary@battisfordcricket.co.uk for more information particularly if you wish to join as a playing or social member



**OPEN AFTERNOON  
SUNDAY 4th JULY  
2:00pm – 5:00pm**

- Follow the trail around the site to see what has been achieved so far.
- Have a look at the plans for the future and comment or make suggestions on what you would like to see or take part in.

**Oaks Meadow, Bildeston Road, Little Finborough IP14 2JX**

Further details from: Desiree Shelley, Chair of Trustees

**desshelley@talk21.com**

**www.oaksmeadow.org.uk** Facebook page: **Oaks Meadow Project**

### Did You Know?

Cardinal Thomas Wolsey father Robert Wolsey was born in Combs. He married Joan Daundy, they then left and moved to Ipswich. It is recorded Robert was a butcher by trade but a Wolsey biographer, Mandel Creighton, wrote that Robert Wolsey's will showed he was both a grazier and a wool merchant. That would mean Thomas was born into wealth, which would explain how he was able to receive the quality of education he did.

Robert Wolsey was born in 1441 - 1445 in the village of Combs and died September 1496 in Ipswich.

He married Joan Daundy in 1469.

It is thought that Robert Wolsey lived in a property on the right hand side in Tannery Road.

Robert and Joan had 5 sons and 3 daughters,

Robert Wolsey (1461) Ipswich died (1496) aged 58 Ipswich

Sir William Wolsey (1462) Ipswich

Andrew Wolsey (1466) Ipswich

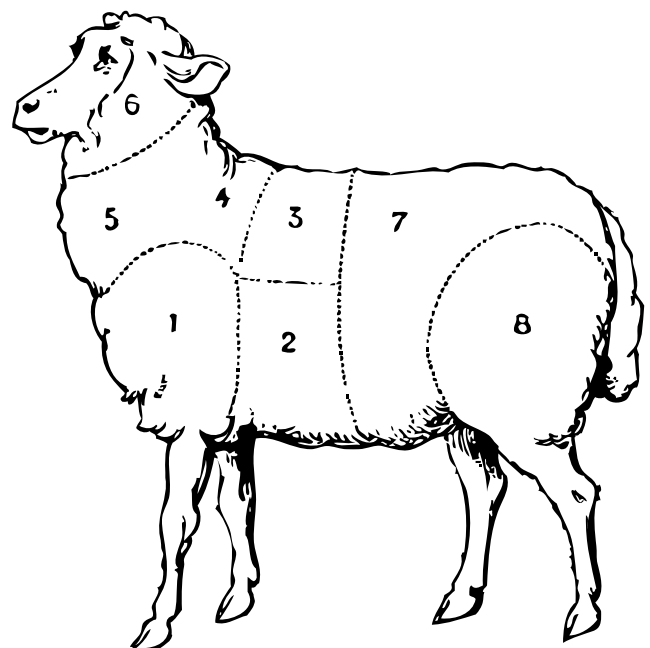
Cardinal Thomas Wolsey Lord Chancellor of England (1472) Ipswich

Elizabeth Fairchild (1477) Ipswich

Agnes Wolsey

Alice Wolsey (1446) to (1498)

John Wolsey.



## Choose Refills – Mobile Eco Refill Shop



Be part of the solution and take one step towards reducing your plastic waste. Try our zero waste and low waste refilling station for our eco-friendly cleaning, laundry and self care liquids.

Only buy what you need without the unnecessary packaging.

We are bringing the refill revolution to local rural communities to make it easier for everyone to reduce their plastic waste.

### Household cleaning and laundry range:

We have a wide range of eco-friendly, cruelty free, biodegradable and phosphate free detergents for your home. All of our bulk buy containers are sent back to our suppliers to be refilled, not sent to landfill.

### Bath and Body Range :

We stock eco friendly shampoo, conditioner and body wash refills as well as a range of locally produced shampoo bars, soap bars and body care liquids and lots more.

Simply bring your own container along to one of our pop up shops to refill. If you don't have a suitable container we do have a range of reusable bottles available to purchase which you can refill over and over again.

If you can't make it to one of these pop up shops, you can order online for local delivery and doorstep refills or find us in another location by checking out our website [www.chooserefills.co.uk](http://www.chooserefills.co.uk) for more information.

See us at **The Punch Bowl, Batisford**

Saturday 3rd July, 9 - 11am

Monday 19th July, 5-7pm

Saturday 7th August, 9 - 11am

Monday 16th, 5 - 7pm

## Rural Coffee Caravan



July 21st

10 -12

Combs Green

Stowmarket, Suffolk IP14 2NP

*Come along for a Covid  
secure chat, please bring  
your own chair*

[www.ruralcoffeecaravan.org.uk/events](http://www.ruralcoffeecaravan.org.uk/events)



[www.orchardbarn.org.uk](http://www.orchardbarn.org.uk)

**FREE WORKSHOPS**

**Nettle Uses 10th July**

**10 - 12 or 2 - 4**

**Deadwood Screen  
Construction**

**13th July 10 - 12 or 2 - 4**

**All activities will be in small  
groups, outside, and socially  
distanced**

[ginny.orchardbarn@gmail.com](mailto:ginny.orchardbarn@gmail.com)

